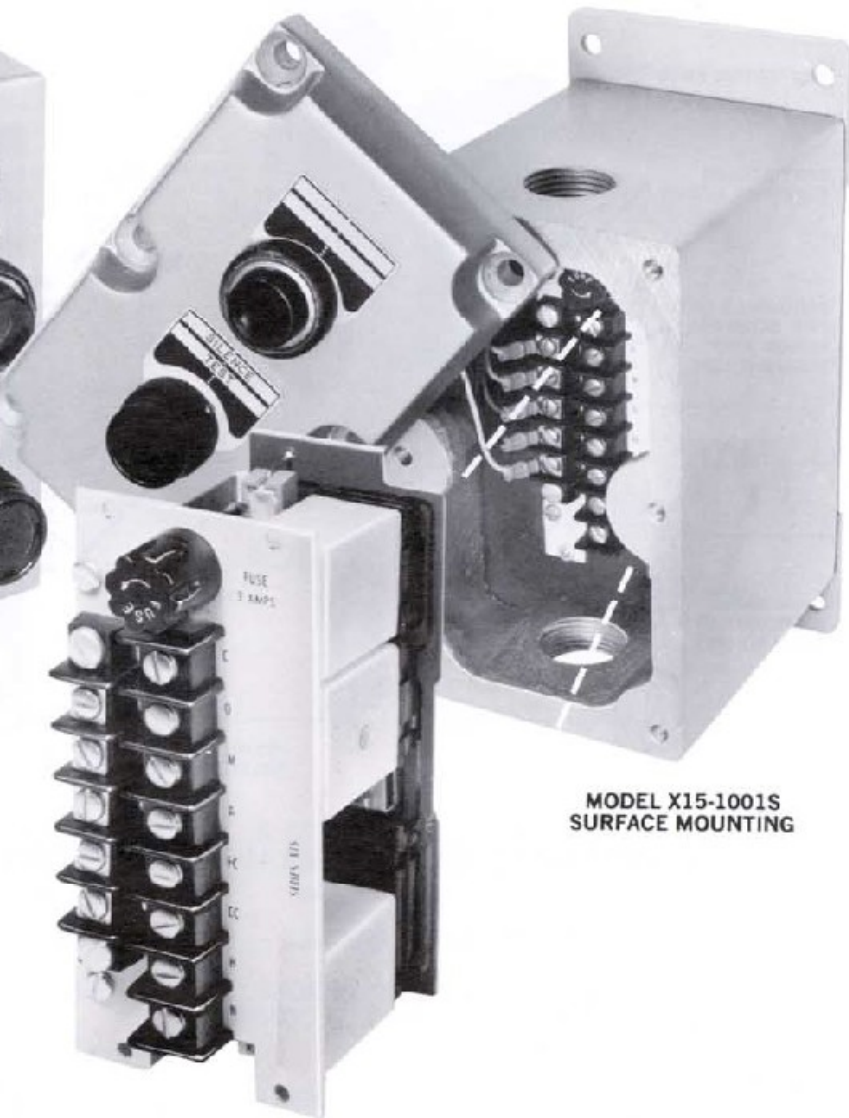


SERIES X15 EXPLOSION PROOF ALARMS



**MODEL X15-1001P
PANEL MOUNTING**



**MODEL X15-1001S
SURFACE MOUNTING**

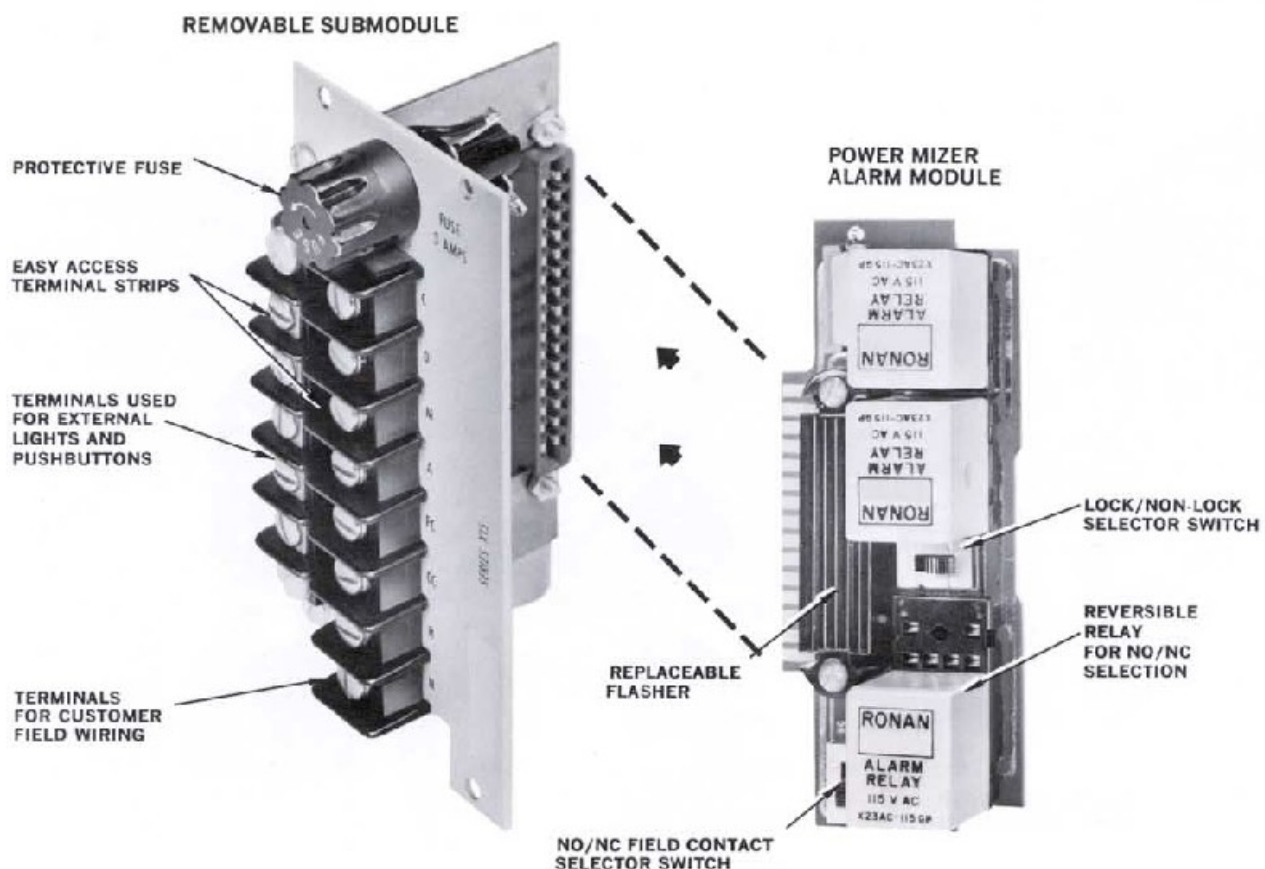
REMOVABLE SUBMODULE

These self contained alarms provide complete annunciation capability for Class I, Division 1, Group D — Explosion Proof Applications. Each alarm contains the necessary logic, light indicator, and pushbutton switch for single point monitoring of Normally Open or Normally Closed field contacts. Complete logic circuitry provides standard "A" alarm sequence with flashing light and horn on alarm, steady light-silent horn after acknowledgement, and light out-horn silent when trouble contacts return to normal. The isolated SPDT

auxiliary contacts may be used with other alarm systems or as electrical interlocks.

Improved design allows easy field wiring and startup by use of a removable submodule. This submodule contains the NO/NC Field Contact Switch, the Lock/Non-Lock feature for momentary alarms, fuse holder, and the Power Miser Alarm Module. A single pushbutton switch is used for both silence and lamp test functions. Either surface or panel mounted designs are available as illustrated.

SERIES X15 EXPLOSION PROOF ALARMS (Cont.)



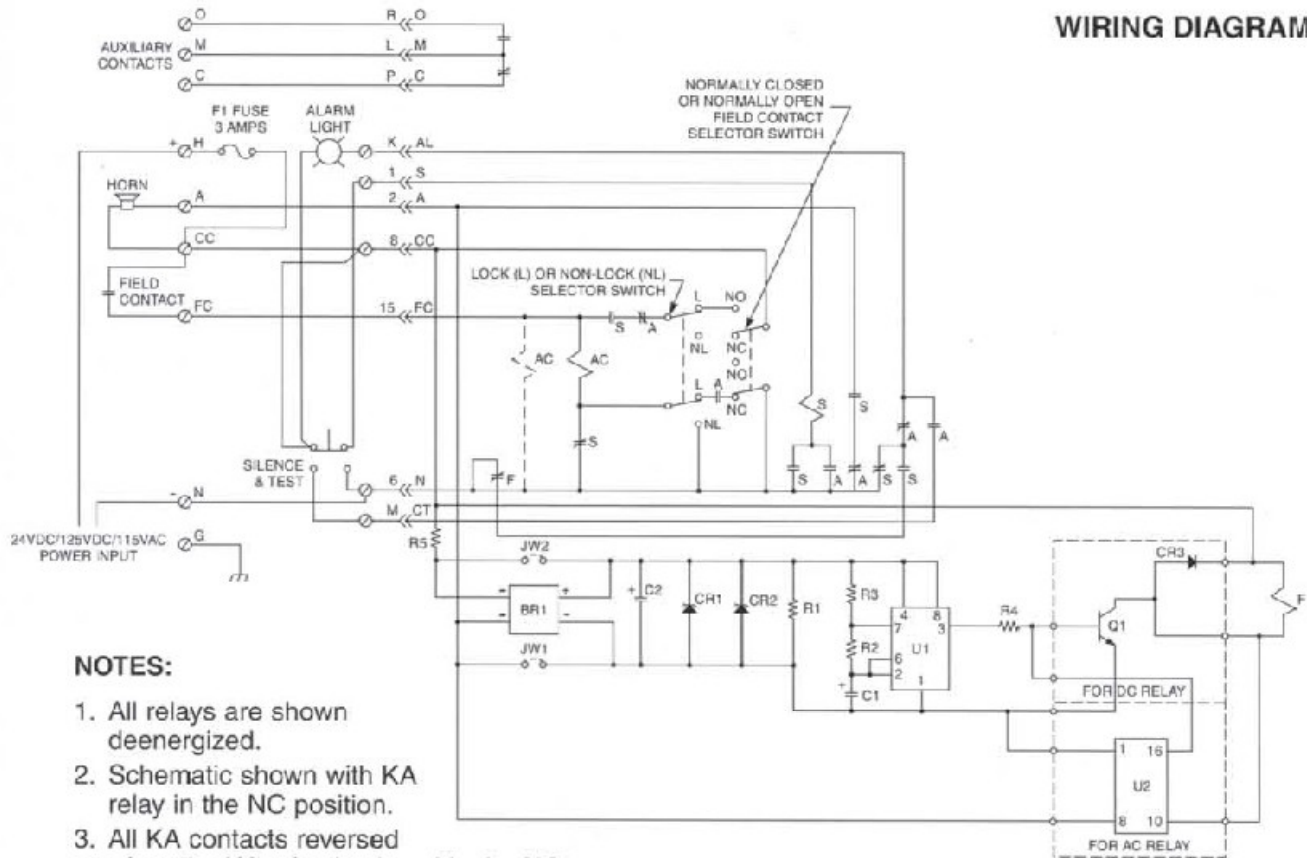
- REMOVABLE SUBMODULE FOR MAXIMUM FIELD WIRING ACCESS
- POWERMIZER ALARM MODULE — REDUCES POWER CONSUMPTION
- SELECTABLE NO/NC FIELD CONTACTS
- SELECTABLE LOCK/NON-LOCK FEATURE FOR MOMENTARY ALARMS
- ISOLATED CONTACTS FOR DRIVING ADDITIONAL ALARMS OR AS INTERLOCK
- REPLACEABLE FLASHER
- FUSE PROTECTED CIRCUITRY

SEQUENCE CHART

CONDITION	FIELD CONTACT	ALARM LIGHTS	HORN	KA RELAY IN NC POSITION	KA RELAY IN NO POSITION	KS RELAY
Normal	Normal	Off	Off	Energized	Deenergized	Energized
Alarm	Abnormal	Flashing	On	Deenergized	Energized	Energized
Silence	Abnormal	On	Off	Deenergized	Energized	Deenergized
Normal	Normal	Off	Off	Energized	Deenergized	Energized
Lamp Test	Normal	On	Off	Energized	Deenergized	Energized

SERIES X15 EXPLOSION PROOF ALARMS (CONT.)

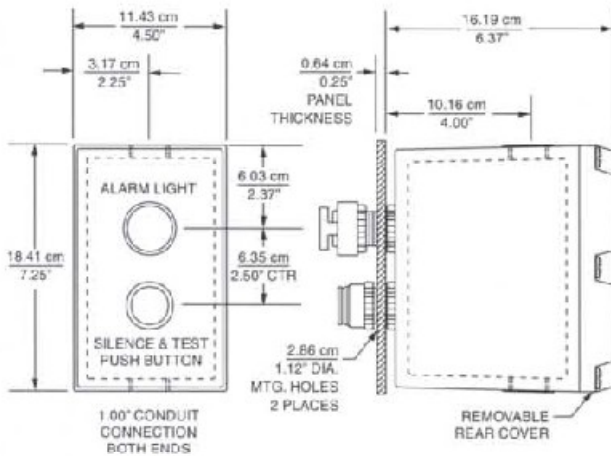
WIRING DIAGRAM



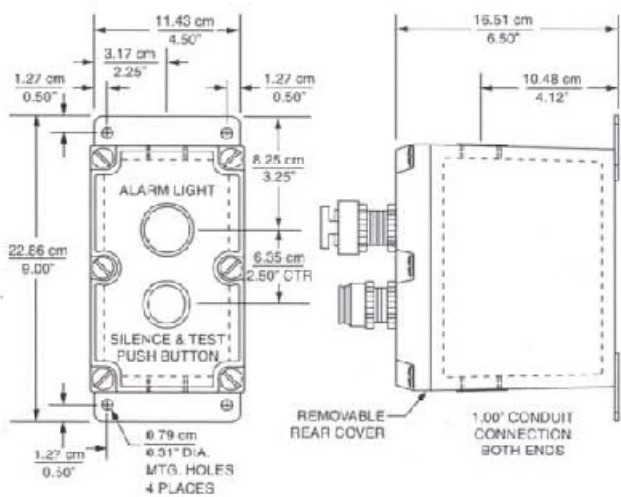
NOTES:

1. All relays are shown deenergized.
2. Schematic shown with KA relay in the NC position.
3. All KA contacts reversed when the KA relay is placed in the NO position.
4. Lamp test does not operate any relays.
5. Horn circuit loading not to exceed 3 Amps, use horn relay for larger currents.
6. To change NO/NC field contact function, both the NO/NC selector switch and the reversible relay must be placed in the proper position.

MODEL X15-1001P PANEL MOUNTING



MODEL X15-1001S SURFACE MOUNTING



ORDERING INFORMATION

Specify: X15-1001P for Panel Mounting Unit
 X15-1001S for Surface Mounting Unit
 Operating Voltage - 115VAC or 125VDC
 Accessory Explosion Proof Horn