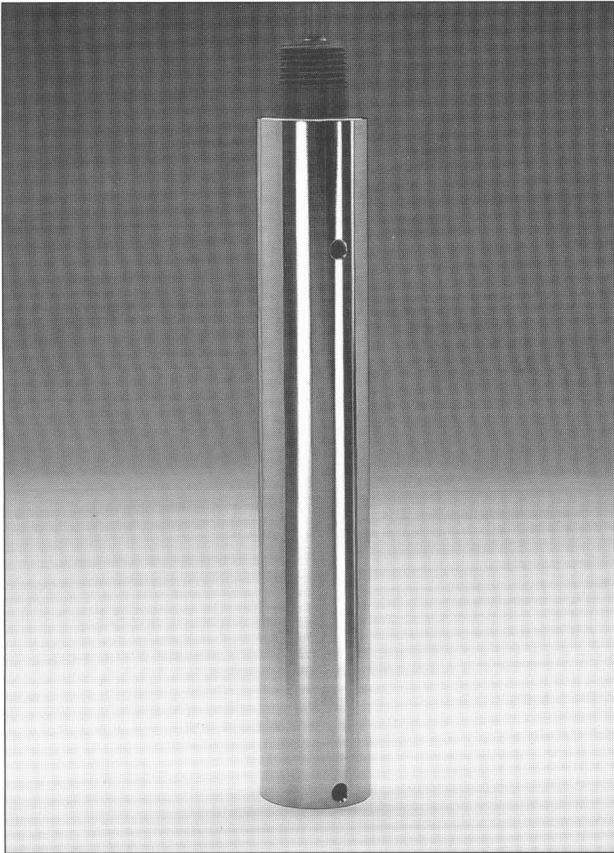


## Hydrostatic Reservoir Sensor Model LS-30



Ronan's Model LS-30 Hydrostatic Reservoir Leak Sensor is designed to detect changes in liquid level within reservoirs of hydrostatic monitored double-wall tanks. Constructed of 304 stainless steel, polysulfone, Beryllium Copper and PVC, the LS-30 will provide years of trouble-free service.

The LS-30 can be installed to provide discrete indications of liquid increase or liquid loss, or provide high either/ or low liquid indications. A breach of the tanks inner wall will allow reservoir liquid to escape the interstice into the primary tank, and a reservoir level drop will occur. A breach of the outer tank wall will allow reservoir liquid to escape the interstice into the environment, or ground water to enter the interstice, and a reservoir level change will occur. Liquid increase or loss, sufficient to move the sensor's float will transmit a signal to the control panel to initiate control functions or annunciate alarms.

### Typical Applications

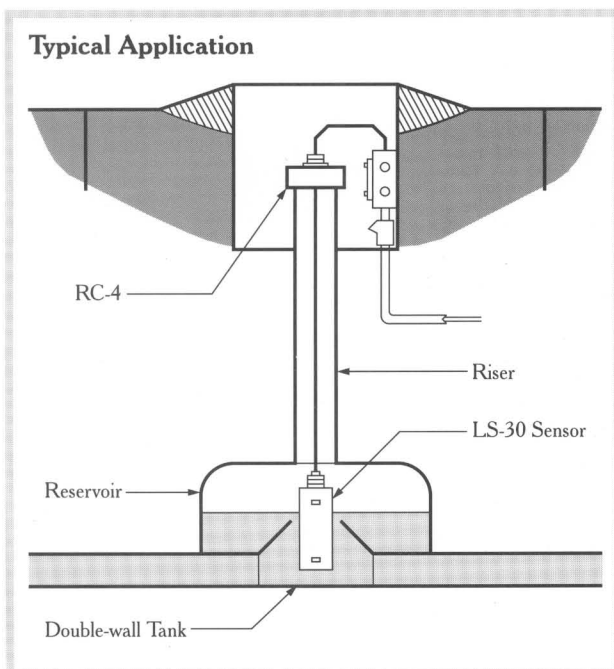
- DW Fiberglass Tank Reservoir Monitoring
- Low and Low Low Level Monitoring
- High Level/Overfill Monitoring
- Vertical Application Dual Point Level Sensing

### Dependable, Simple Operation

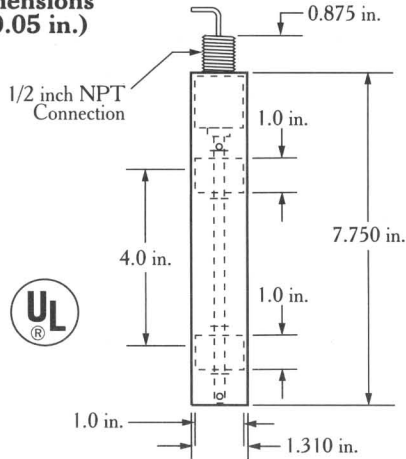
Ronan's LS-30 Sensor operates on a direct principle. Glass encapsulated, hermetically sealed, reed switches are embedded within the sensor stem. Permanent magnets within the sensor floats create a magnetic field which surrounds the reed switches. When a magnetic field is removed by movement of one or both floats, the reed switch is actuated, thereby changing state. This condition either opens a closed switch or closes an open switch. This change in state is then signaled to the control panel.

### Application

The LS-30's design allows rigid or flexible mounting for easy periodic testing as required by many regulatory agencies. The sensor may be mounted loosely suspended by its cable, or rigid with the 1/2 inch NPT nipple. The LS-30 may also be supplied with the optional RC-4 four inch riser cap assembly. The LS-30 is supplied with the low circuit N.O. and the high circuit N.C. Other logic configurations are available by specifying at time of order.



**Dimensions  
(±0.05 in.)**



**Specifications**

Specifications are subject to change without notice. Contact Ronan Engineering to verify critical specifications.

**Wetted Parts:** 304 and 316 Stainless Steel, Beryllium Copper, Polysulfone, PVC

**Mounting:** 1/2" NPT, male

**Switch Rating:** SPST, 20VA, 120-240 Vac pilot duty

**Operating Temperature:** -40°F to +225°F

**Float S.G.:** 0.65

**Pressure:** 75 psi maximum

**Cable:** PVC jacket, 2 twisted pair, 20AWG, 15 ft

**Options**

**RC4:** 4" PVC riser cap with cable grip and vent port

**Ordering Information**

Part No.	Description
LS-30	Standard Hydrostatic Reservoir Sensor
LS-30LL	Dual Point Low/Low Low Level Sensor
LS-30HH	Dual Point High/High Level Sensor

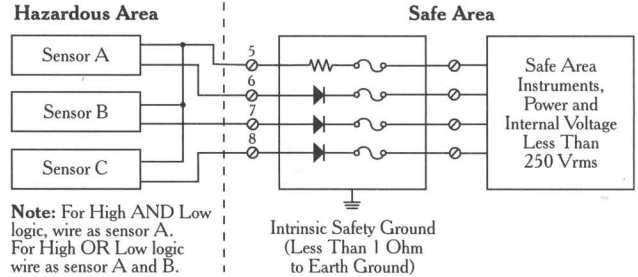


**Ronan Engineering Company**  
**Leak Detection Measurements Division**  
 21200 Oxnard Street, Woodland Hills, California 91367  
 818.883-5211 FAX: 818.992.6435  
<http://www.ronan.com> E-mail: [info@ronan.com](mailto:info@ronan.com)

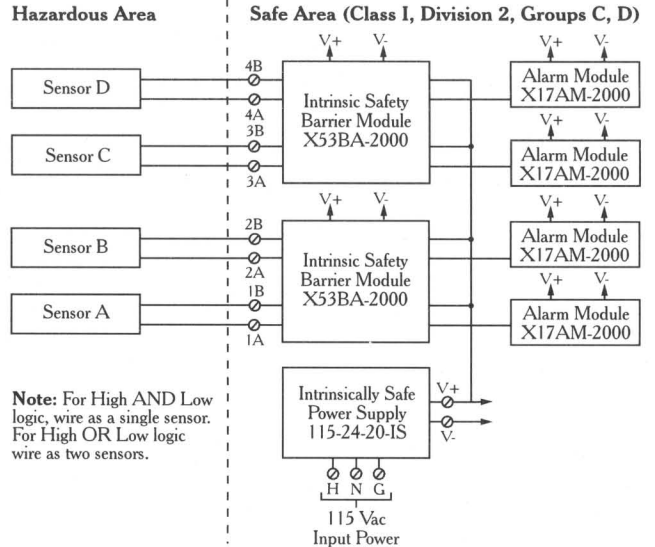
LS-30/Rev. 1

**Typical Wiring Diagrams**

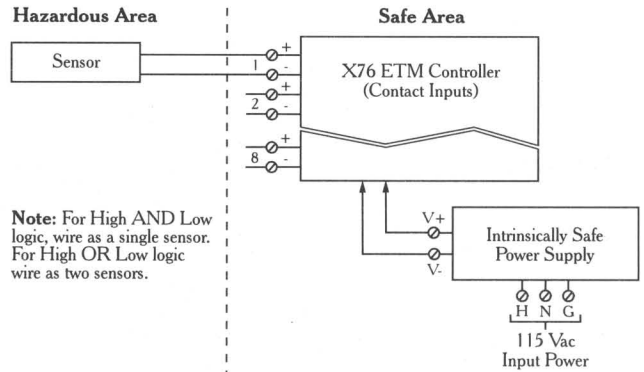
**X76LVC, X76LVCS, X76-4X & X76AST-4X Systems**



**X76S System**



**X76ETM-4X & X76ETM Systems**



For additional information, catalogs and pricing, contact your local Ronan distributor or call 800-32-RONAN.