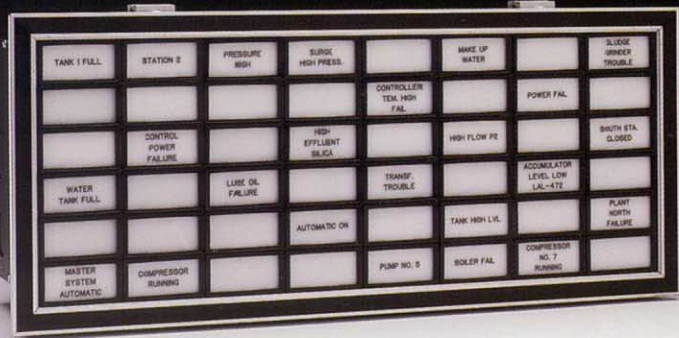


# SERIES LB - 2448



Now Available in LED Version.

The Series LB-2448 Lamp Cabinets are factory assembled from single metric-sized modules 24 mm high by 48 mm wide. The lamp cabinet may be any number of windows high or wide. Windows are illuminated by two incandescent bulbs or a number of high intensity LEDs. The window bezels and nameplates are available in a variety of colors. The assembly provides rear mounted compression-type terminals for external wiring termination or factory wiring to multipin connectors allowing interface via multiconductor cables to the lamp driver logic. Standard voltages are 24 Vdc for LED type displays and 24 Vdc/Vac, 48 Vdc/Vac, 125 Vdc or 115 Vac for incandescent lamps.

## SPECIFICATIONS

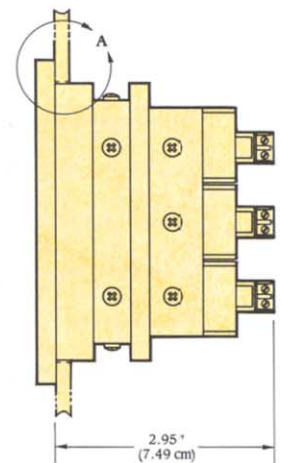
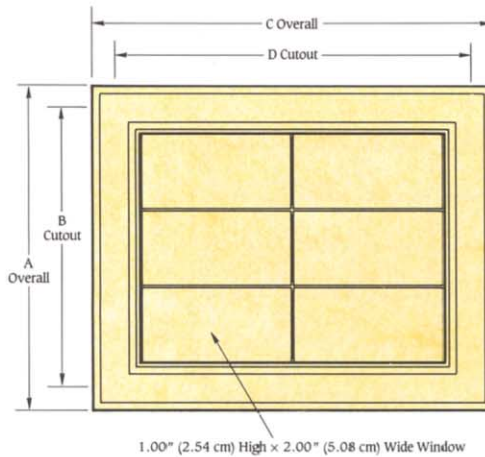
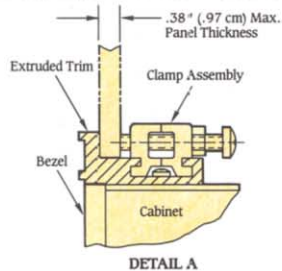
**Standard Voltages:** Lamps—24 Vdc/Vac, 48 Vdc/Vac, 125 Vdc, 115 Vac; LEDs—24 Vdc.

**Cabinet Size:** Any number of windows high and wide. (May exceed the numbers shown in the table below.)

**Lamp Wattage:** Incandescent—Two 2-Watt lamps per window; LEDs—1 Watt power dissipation; 36 mA @24 Vdc per window.

**Lenses:** Sandwich type lenses available.

**Push-button Modules:** Integral push-button modules offered as an option.



### To Order:

( )-( )-LB-2448-( )-( )

- 24—24 Vdc/Vac
- 48—48 Vdc/Vac
- 115—115 Vac
- 125—125 Vdc
- LED—LEDs-24 Vdc
- Rear Mounted Connectors
- Windows Wide
- Windows High

Specify number and location of push buttons required.

| No. of Windows | Windows High          |                      | Windows Wide          |                      | No. of Windows | Windows Wide          |                      |
|----------------|-----------------------|----------------------|-----------------------|----------------------|----------------|-----------------------|----------------------|
|                | A—Overall inches (cm) | B—Cutout inches (cm) | C—Overall inches (cm) | D—Cutout inches (cm) |                | C—Overall inches (cm) | D—Cutout inches (cm) |
| 1              | 2.28 (5.79)           | 1.71 (4.34)          | 3.31 (8.41)           | 2.74 (6.96)          | 13             | 27.67 (70.28)         | 27.10 (68.83)        |
| 2              | 3.31 (8.41)           | 2.74 (6.96)          | 5.34 (13.56)          | 4.77 (12.12)         | 14             | 29.70 (75.44)         | 29.13 (73.99)        |
| 3              | 4.34 (11.02)          | 3.77 (9.58)          | 7.37 (18.72)          | 6.80 (17.27)         | 15             | 31.73 (80.59)         | 31.16 (79.15)        |
| 4              | 5.37 (13.67)          | 4.80 (12.19)         | 9.40 (23.88)          | 8.83 (22.43)         | 16             | 33.76 (85.75)         | 33.19 (84.30)        |
| 5              | 6.40 (16.26)          | 5.83 (14.81)         | 11.43 (29.03)         | 10.86 (27.58)        | 17             | 35.79 (90.91)         | 35.22 (89.46)        |
| 6              | 7.43 (18.88)          | 6.86 (17.42)         | 13.46 (34.19)         | 12.89 (32.74)        | 18             | 37.82 (96.06)         | 37.25 (94.62)        |
| 7              | 8.46 (21.49)          | 7.89 (20.04)         | 15.49 (39.34)         | 14.92 (37.90)        | 19             | 39.85 (101.22)        | 39.28 (99.77)        |
| 8              | 9.49 (24.10)          | 8.92 (22.66)         | 17.52 (44.50)         | 16.95 (43.05)        | 20             | 41.88 (106.38)        | 41.31 (104.93)       |
| 9              | 10.52 (26.73)         | 9.95 (25.27)         | 19.55 (49.66)         | 18.98 (48.21)        |                |                       |                      |
| 10             | 11.55 (29.34)         | 10.98 (27.89)        | 21.58 (54.81)         | 21.01 (53.37)        |                |                       |                      |
| 11             | 12.58 (31.95)         | 12.01 (30.51)        | 23.61 (59.97)         | 23.04 (58.52)        |                |                       |                      |
| 12             | 13.61 (34.57)         | 13.04 (33.12)        | 25.64 (65.13)         | 25.07 (63.68)        |                |                       |                      |